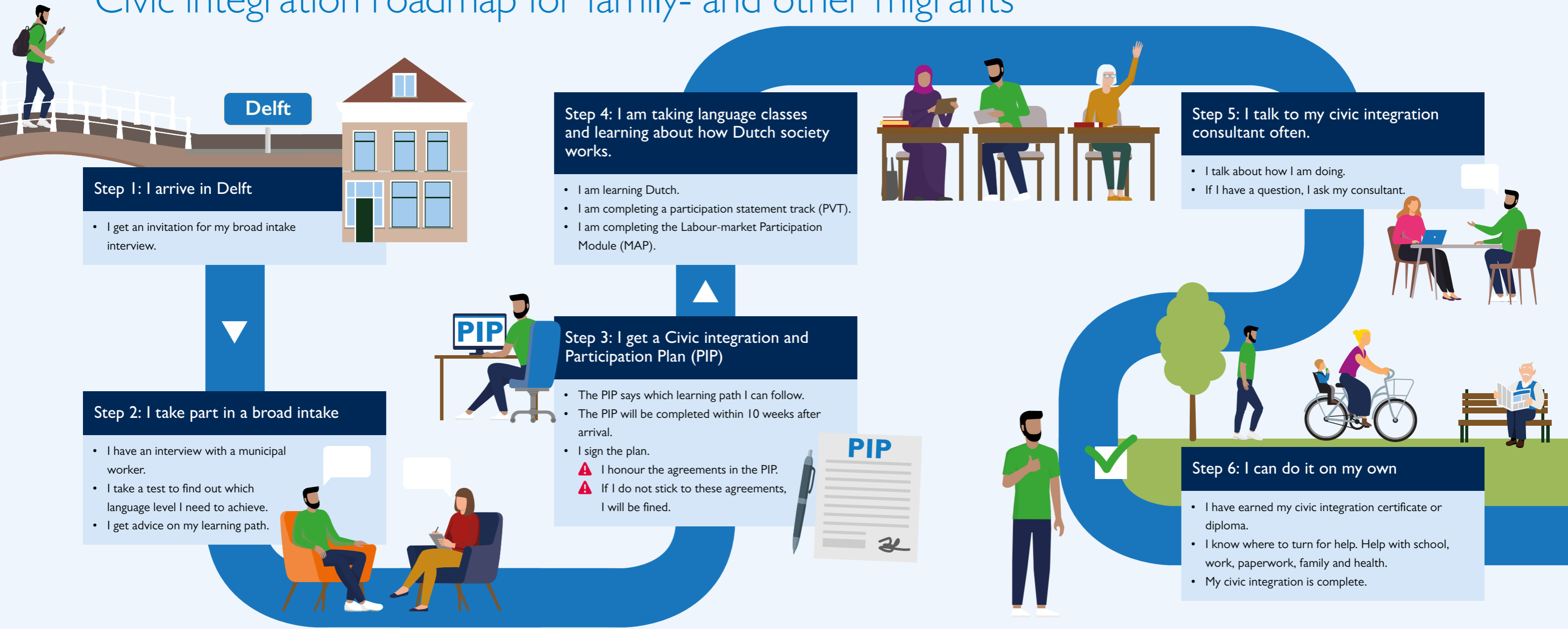


# Civic integration roadmap for family- and other migrants



## What these organisations do:

The education executive agency **DUO (Dienst Uitvoering Onderwijs)** decides who must complete civic integration. Administers the central civic integration exams for language education.

**The Municipality of Delft** will conduct the broad intake and draw up a Civic integration and Participation Plan (PIP).

## What it means:

**Broad intake.** You will have an interview with a municipal worker to talk about your personal situation and you will take a test. This will show what your learning level is.

**Civic integration consultant.** They are my contact person at the Municipality of Delft; I have progress meetings with them.

**Learning ability test.** Test that shows what your learning level is. This is part of the “broad intake”.

**Learning paths.** You will receive language lessons at the right level for you. There are three learning paths:

- The B1 path. For learning the language (B1) and gaining knowledge of Dutch society (KNM).
- The educational path. For learning the language (B1-B2) and quick admission to a study programme. Especially for young people.
- The self-sufficiency path. For learning the language (A1-A2) and gaining knowledge of Dutch society (KNM).

**Labour-market and Participation Module (Module Arbeidsmarkt en Participatie, MAP).** Activities aimed at orienting you to the labour market. Carried out by Werkse!

**Participation statement track (Participatieverklarings-traject, PVT).** Introduction to Dutch values: freedom, equality, solidarity and participation. Carried out by Taalschool Rijswijk.

**Civic integration and Participation Plan (Plan Inburgering en Participatie, PIP).** All the agreements you make about your civic integration are set out in this plan.